

ECUMEN®

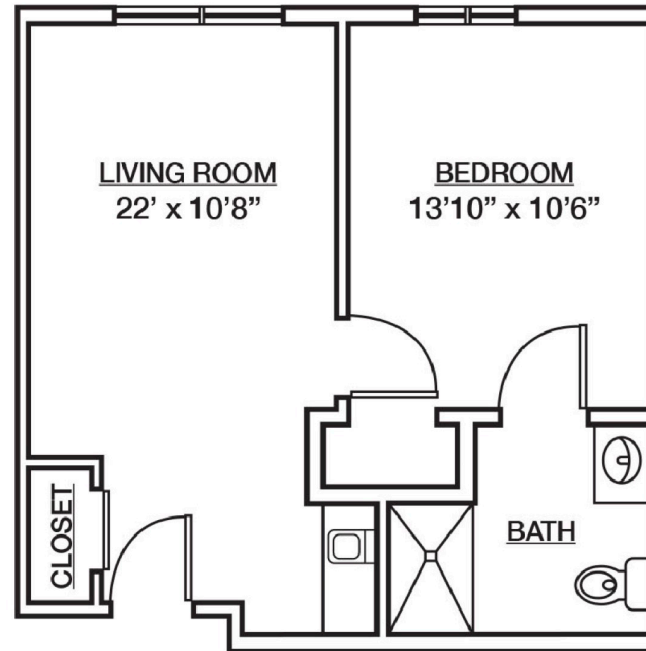
Pathstone

718 MOUND AVENUE
MANKATO, MINNESOTA 56001

PATHSTONE CROSSING
ASSISTED LIVING

ONE BEDROOM
480 SF

4001, 4002, 4003, 4004,
4006, 4010, 4011, 4012,
4013, 4014, 4015, 4016,
4018, 4019, 4020, 4021,
4023, 4025, 4027, 4028,
4029, 4030, 4031, 4032,
4033



AN **ECUMEN®** LIVING SPACE

(507) 345-4576 ecumenpathstone.org

** Please note: actual room dimensions may vary.*

ECUMEN®

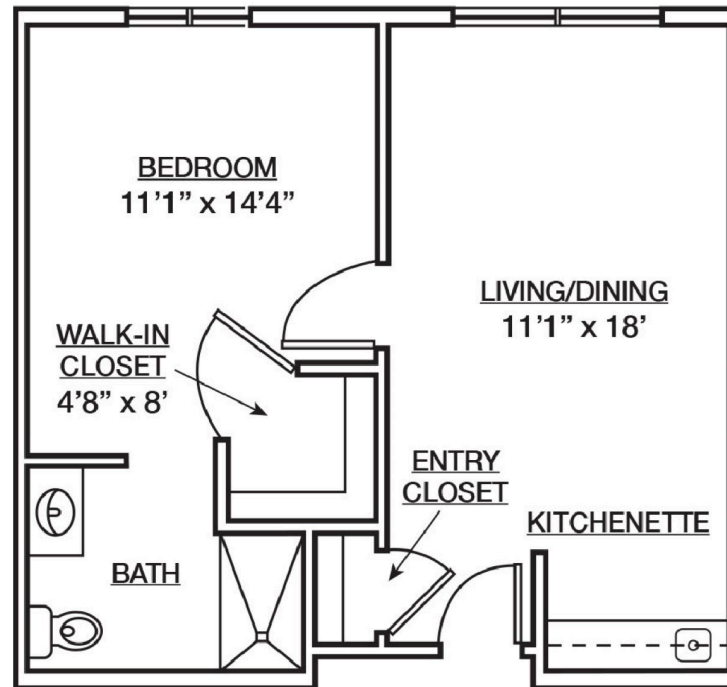
Pathstone

718 MOUND AVENUE
MANKATO, MINNESOTA 56001

PATHSTONE CROSSING
ASSISTED LIVING

ONE BEDROOM
500 SF

5100, 5101, 5103, 5104,
5105, 5106, 5107, 5109,
5110, 5111, 5200, 5201,
5202, 5203, 5205, 5206,
5207, 5208, 5209, 5211,
5212



AN **ECUMEN®** LIVING SPACE

(507) 345-4576 ecumenpathstone.org

** Please note: actual room dimensions may vary.*

ECUMEN[®]

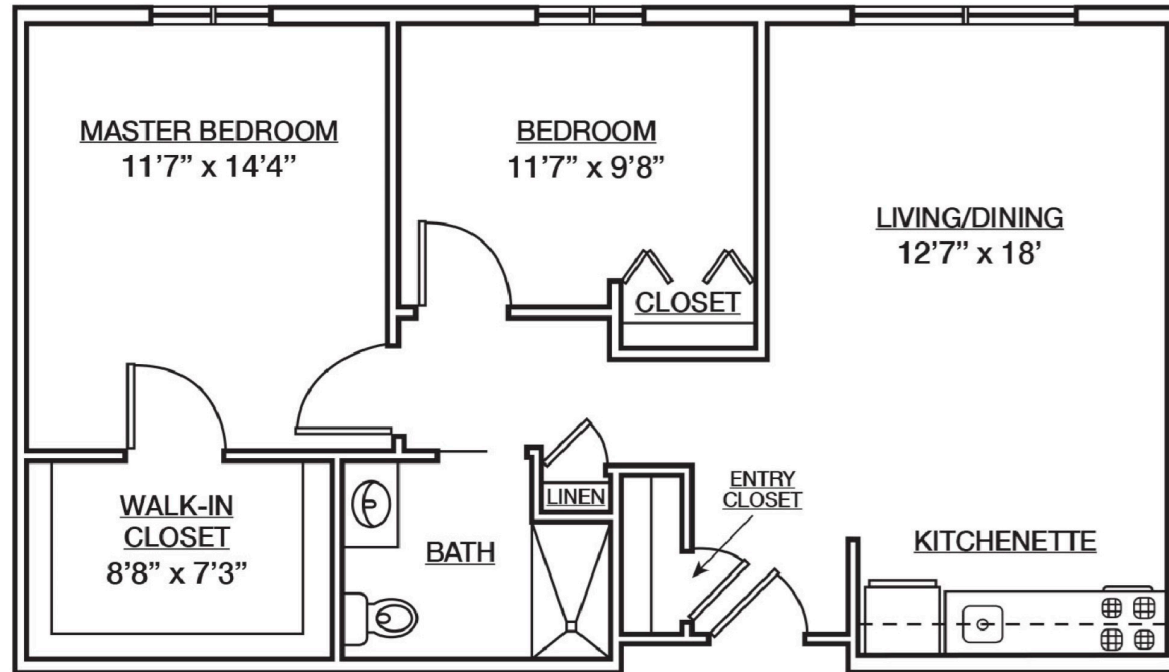
Pathstone

718 MOUND AVENUE
MANKATO, MINNESOTA 56001

PATHSTONE CROSSING
ASSISTED LIVING

TWO BEDROOM
810 SF

5102, 5108, 5210, 5214



AN **ECUMEN[®]** LIVING SPACE

(507) 345-4576 ecumenpathstone.org

** Please note: actual room dimensions may vary.*

ECUMEN[®]

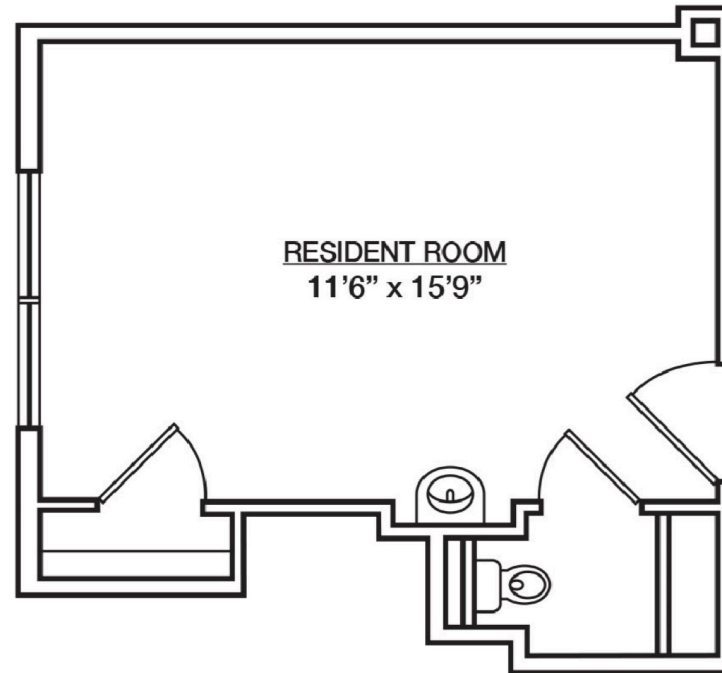
Pathstone

718 MOUND AVENUE
MANKATO, MINNESOTA 56001

PATHSTONE CROSSING
ASSISTED LIVING

STUDIO
250 SF

5214, 5216



AN **ECUMEN[®]** LIVING SPACE

(507) 345-4576 ecumenpathstone.org

** Please note: actual room dimensions may vary.*